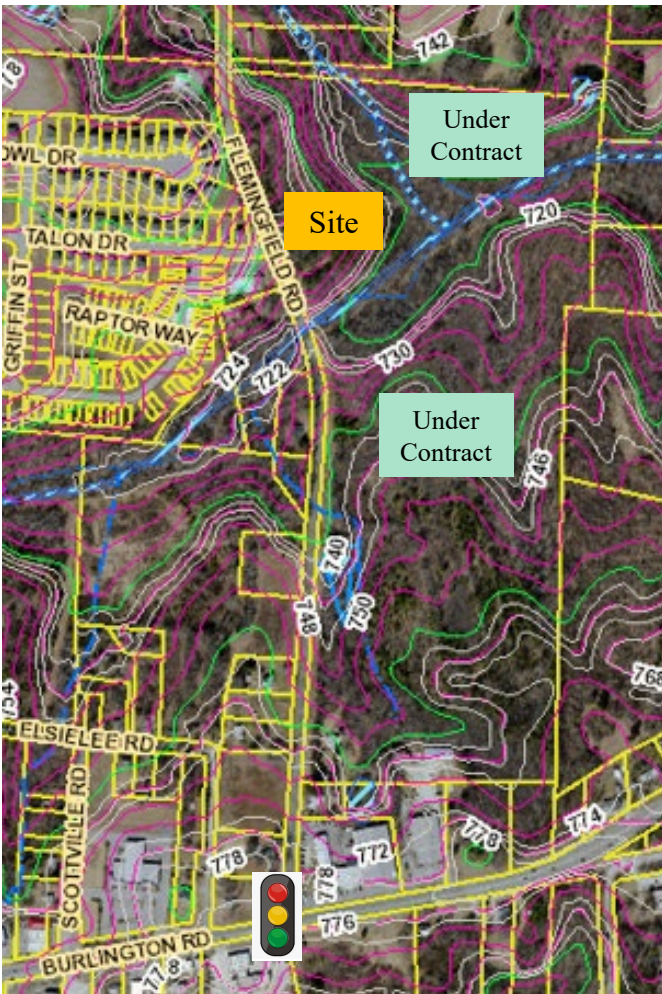
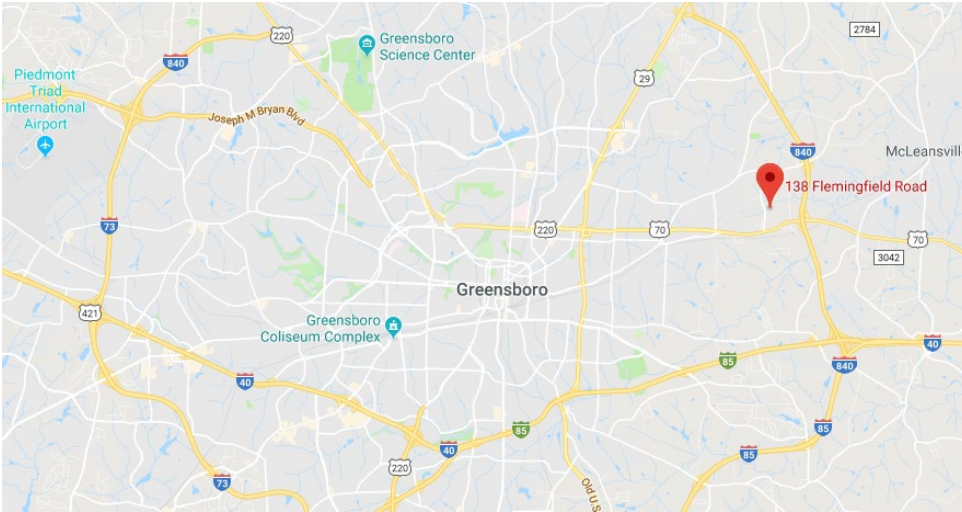


Residential Land Near I-840

138 Flemingfield Road, Greensboro NC

DOWELL
COMMERCIAL



This Property Offers:

Site: Subdivision of Guilford County parcel 115006.

Land Area: 8.467 acres. Land inside the creeks.

Access & Frontage: Approx. 1,000 feet of frontage and easy access off of Flemingfield Road.

Zoning (Current): Guilford County zoning AG.

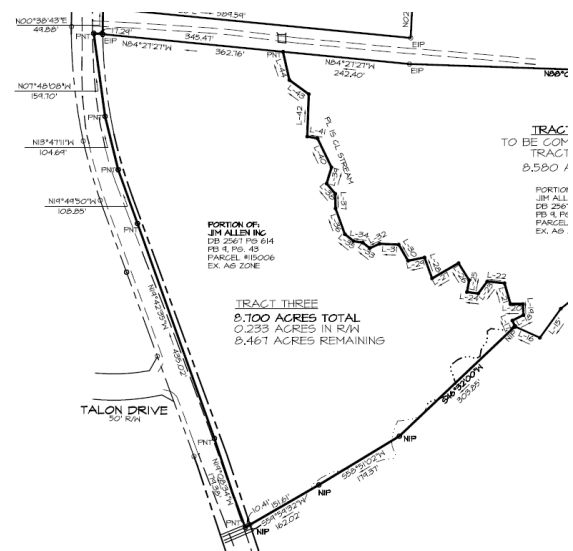
Site will require annexation and is in Growth Tier 1.

Zoning (Future Use): Residential. Prior future use plans called for up to 12 units / acre.

Utilities: Annexation into Greensboro is required for access to utilities. Lines are in immediate proximity.

Surrounding Development: Mixed product residential developments of single family homes, townhomes, etc.

Opportunity: For sale at \$35,000 / acre.



For More Details, Contact:

Sean Dowell

Office: (336) 378-5067

Sean@DowellCommercial.com

www.DowellCommercial.com

No warranty or representation, expressed or implied, is made as to the accuracy of the information contained herein and same is submitted subject to errors, omissions, changes of price, rental or other conditions, withdrawn without notice, and to any specific listing conditions, imposed by our principles.