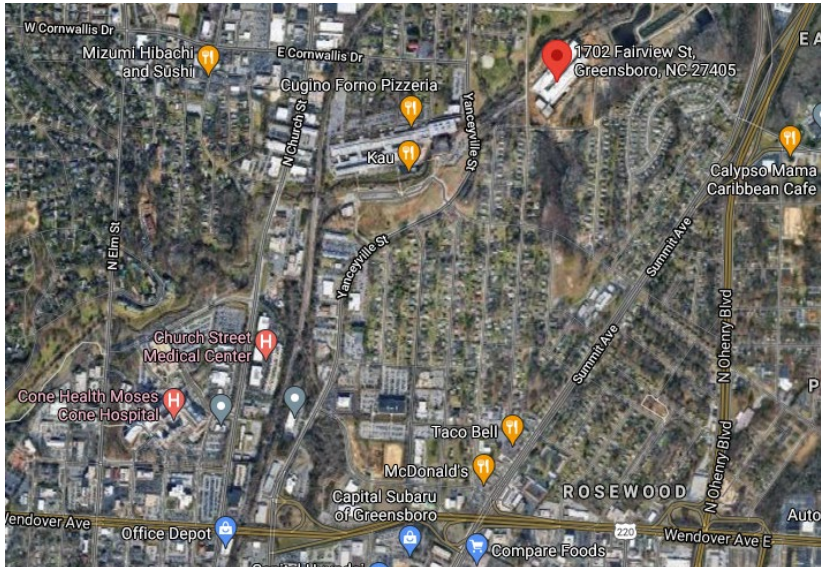
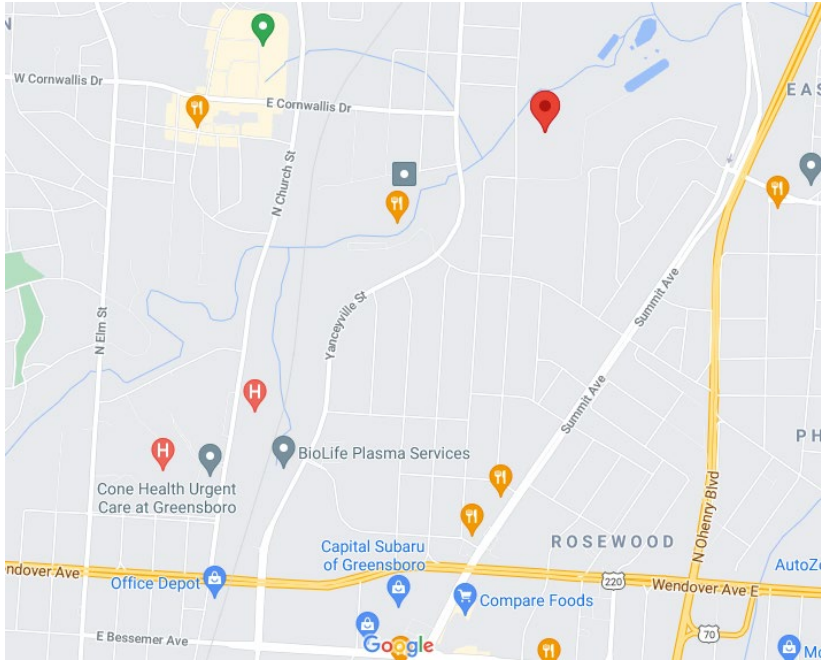




Printworks Mill, Greensboro Photo Tour

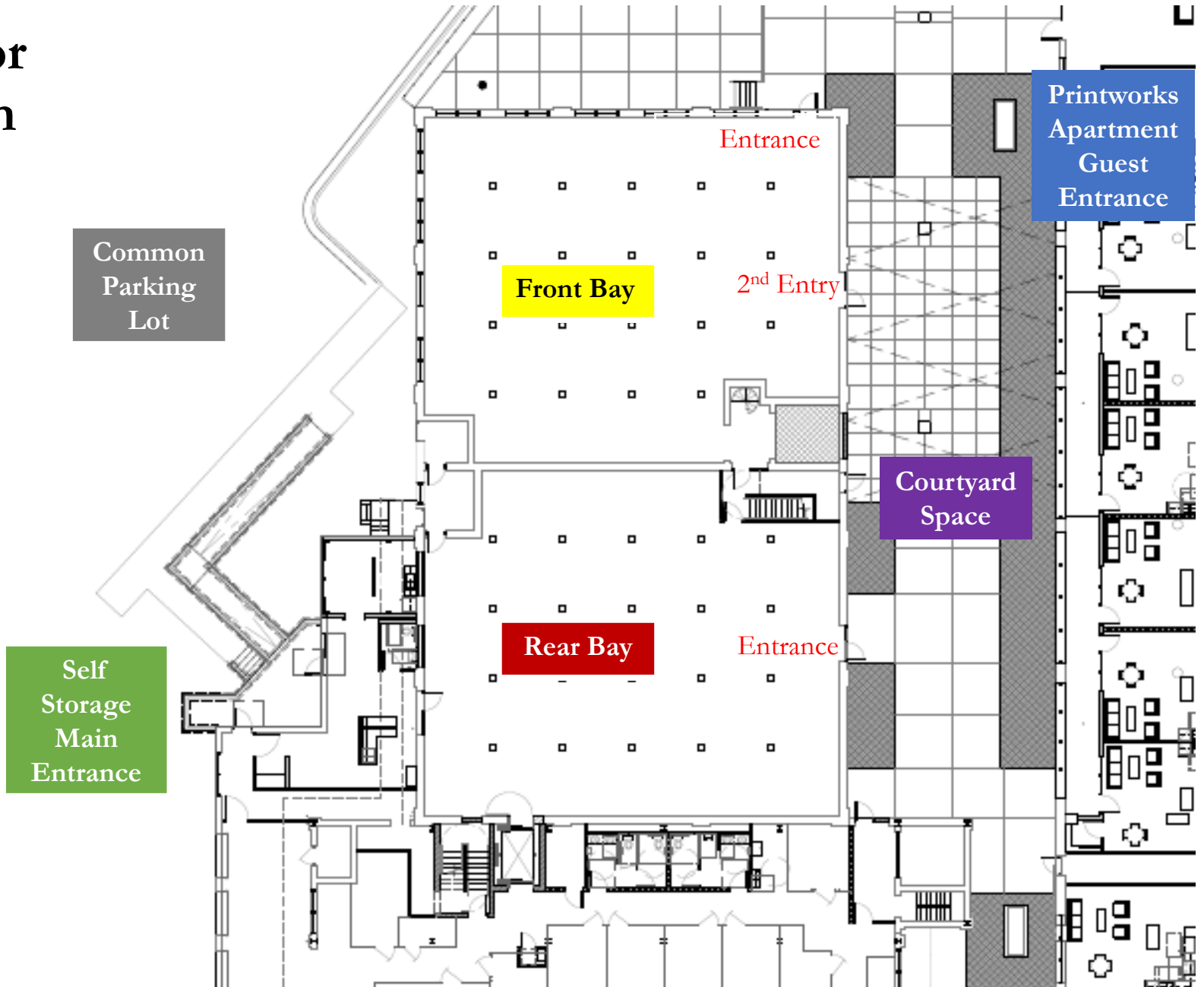
For more information on available space,
contact Sean Dowell at 336-378-5067 or
sean@dowellcommercial.com



Printworks Mill, @ 1702 Fairview Street, Greensboro

Up to 9K SF of retail
or event space for lease

Floor Plan



Other Exterior Photos



Above: Side view of building looking at the Self Storage Main Entrance

Right: Front view showing the building's height profile and different window sizes per floor



Large Historic Windows Allow Excellent Natural Light



An Excess of Courtyard Space



Front Bay

Historic wood beams
framed by abundant
windows.



Space specifications for the Front Bay:

- Approx. 4,500 SF
- Large open floor plan
- Two entry doors. A main front door as well as a side door to common courtyard space
- Back access to a common building stairwell and emergency exit.
- 11' x 11' column spacing
- 10' clear to HVAC
- 12' clear to beams
- 13' clear to deck.

Front Bay Unique Historic Features



Rear Bay

Space specifications for the Rear Bay:

- Approx. 4,500 SF
- Potential connection to Front Bay via a newly created corridor
- Open floor plan
- One entry door. A main front door to the common courtyard space
- Front access to a common building stairwell and emergency exit.
- 11' x 11' column spacing
- Similar clear heights to front bay of 10' – 13' feet.

